

LANDSCAPE DEVELOPMENT APPLICATION



DRAWING NO.	DRAWING TITLE	REVISION
DA_LS1.01	COVER SHEET	A
DA_LS1.02	LANDSCAPE PLAN - GROUND FLOOR / PUBLIC DOMAIN	A
DA_LS1.03	LANDSCAPE PLAN - LEVEL 01	A
DA_LS1.04	LANDSCAPE PLAN - LEVEL 10	A
DA_LS1.05	LANDSCAPE DETAIL PLAN - LEVEL 10 COMMUNAL TERRACE GARDEN	A
DA_LS1.06	PLANT SCHEDULE, MATRICES & IMAGES	A
DA_LS1.07	LANDSCAPE SECTION 1 - LEVEL 10 COMMUNAL TERRACE GARDEN & DESIGN INTENT	A

Project
PROPOSED RESIDENTIAL DEVELOPMENT LANDSCAPING:
32 Joseph Street, Lidcombe, 2141, Sydney
LANDSCAPE DEVELOPMENT APPLICATION

Client
Provent Group

Date
20th June 2017

Drawing No
DA_LS1.01

Prepared by


KANNFINCH

Kann Finch Group Pty Ltd 50 Carrington St. Sydney NSW 2000
ACN 139 614 798 Tel +61 2 9299 4111 www.kannfinch.com
Nominated Architect: Stephen Jamison NSW ARB Reg No 5108

Landscape Architect
Grace Mansour

LANDSCAPE PLAN: GROUND FLOOR / PUBLIC DOMAIN



LEGEND

- 1

PLANTING MATRIX # 1: Native plant mix (refer to plant schedule)
- 2

PLANTING MATRIX # 2: Native grass mix (refer to plant schedule)
- 3

PLANTING MATRIX # 3: Accent shade plant Mix (refer to plant schedule)
- 4

PLANTING MATRIX # 4: Feature plant mix (refer to plant schedule)
- 5

PLANTING MATRIX # 5: Herb garden mix (refer to plant schedule)
- Feature stone paving
- Lawn
- Ca

Cupaniopsis anacardioides
- Ti

Tristaniopsis laurina
- Li

Lagerstroemia indica var. Indian Summer
- 6

Footway as required by Council
- 7

Lawn verge as required by Council
- 8

Street trees as required by Council and in reference to the Street Tree Masterplan (Note: this was unavailable at the time of developing the Landscape DA)
- 9

Vehicular crossover to Council's specifications. (Note) existing redundant crossovers to be removed as required by Council).

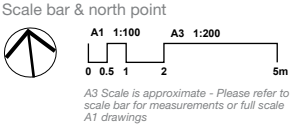
NOTES

- Public Domain upgrades will be as required by Council
- Levels shown are indicative
- Refer to Architectural drawings for levels and further detail

REV	REVISION DESCRIPTION	CHK.	DATE
A	Issued for DA	GM	20.06.17

DO NOT SCALE from this drawing. Use given dimensions only. Check all dimensions on the job prior to commencement of shop drawings or fabrication. Any discrepancies are to be referred to the Architect/Engineer/Designer prior to commencement of work.

Client
Provent Group



Project
PROPOSED RESIDENTIAL DEVELOPMENT LANDSCAPING:
32 Joseph Street, Lidcombe, 2141, Sydney

LANDSCAPE DEVELOPMENT APPLICATION

Prepared by
KANNFINCH
Kann Finch Group Pty Ltd 50 Carrington St, Sydney NSW 2000
ACN 130 614 730 Tel +61 2 9299 4111 www.kannfinch.com
Nominated Architect: Stephen Jamison NSW ARB Reg No 5108

Drawing
LANDSCAPE PLAN
GROUND FLOOR / PUBLIC DOMAIN

Scale
1: 100 @A1
1: 200 @A3

Drawn
GM

Revision
A

Drawing No.
DA_LS 1.02

Date
20.06.17

LANDSCAPE PLAN: LEVEL 01



LEGEND

- 1 PLANTING MATRIX # 1: Native plant mix (refer to plant schedule)
- 2 PLANTING MATRIX # 2: Native grass mix (refer to plant schedule)
- 3 PLANTING MATRIX # 3: Accent shade plant Mix (refer to plant schedule)
- 4 PLANTING MATRIX # 4: Feature plant mix (refer to plant schedule)
- 5 PLANTING MATRIX # 5: Herb garden mix (refer to plant schedule)

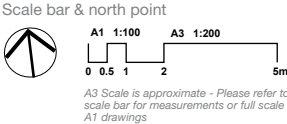
NOTES

- Public Domain upgrades will be as required by Council
- Levels shown are indicative
- Refer to Architectural drawings for levels and further detail

REV	REVISION DESCRIPTION	CHK.	DATE
A	Issued for DA	GM	20.06.17

DO NOT SCALE from this drawing. Use given dimensions only. Check all dimensions on the job prior to commencement of shop drawings or fabrication. Any discrepancies are to be referred to the Architect/Engineer/Designer prior to commencement of work.

Client
Provent Group



Project
PROPOSED RESIDENTIAL DEVELOPMENT LANDSCAPING:
32 Joseph Street, Lidcombe, 2141, Sydney
LANDSCAPE DEVELOPMENT APPLICATION

Prepared by
KANNFINCH
Kann Finch Group Pty Ltd 50 Carrington St, Sydney NSW 2000
ACN 139 614 738 Tel +61 2 9299 4111 www.kannfinch.com
Nominated Architect: Stephen Jamison NSW ARB Reg No 5108

Drawing
LANDSCAPE PLAN
LEVEL 01

Scale
1: 100 @A1
1: 200 @A3

Drawn
GM

Revision
A

Drawing No.
DA_LS 1.03

Date
20.06.17

LANDSCAPE PLAN: LEVEL 10



LEGEND

- 1 PLANTING MATRIX # 1: Native plant mix (refer to plant schedule)
- 2 PLANTING MATRIX # 2: Native grass mix (refer to plant schedule)
- 3 PLANTING MATRIX # 3: Accent shade plant Mix (refer to plant schedule)
- 4 PLANTING MATRIX # 4: Feature plant mix (refer to plant schedule)
- 5 PLANTING MATRIX # 5: Herb garden mix (refer to plant schedule)
- 6 Communal Terrace Garden

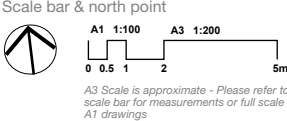
NOTES

- Public Domain upgrades will be as required by Council
- Levels shown are indicative
- Refer to Architectural drawings for levels and further detail

REV	REVISION DESCRIPTION	CHK.	DATE
A	Issued for DA	GM	20.06.17

DO NOT SCALE from this drawing. Use given dimensions only. Check all dimensions on the job prior to commencement of shop drawings or fabrication. Any discrepancies are to be referred to the Architect/Engineer/Designer prior to commencement of work.

Client
Provent Group



Project
PROPOSED RESIDENTIAL DEVELOPMENT LANDSCAPING:
32 Joseph Street, Lidcombe, 2141, Sydney
LANDSCAPE DEVELOPMENT APPLICATION

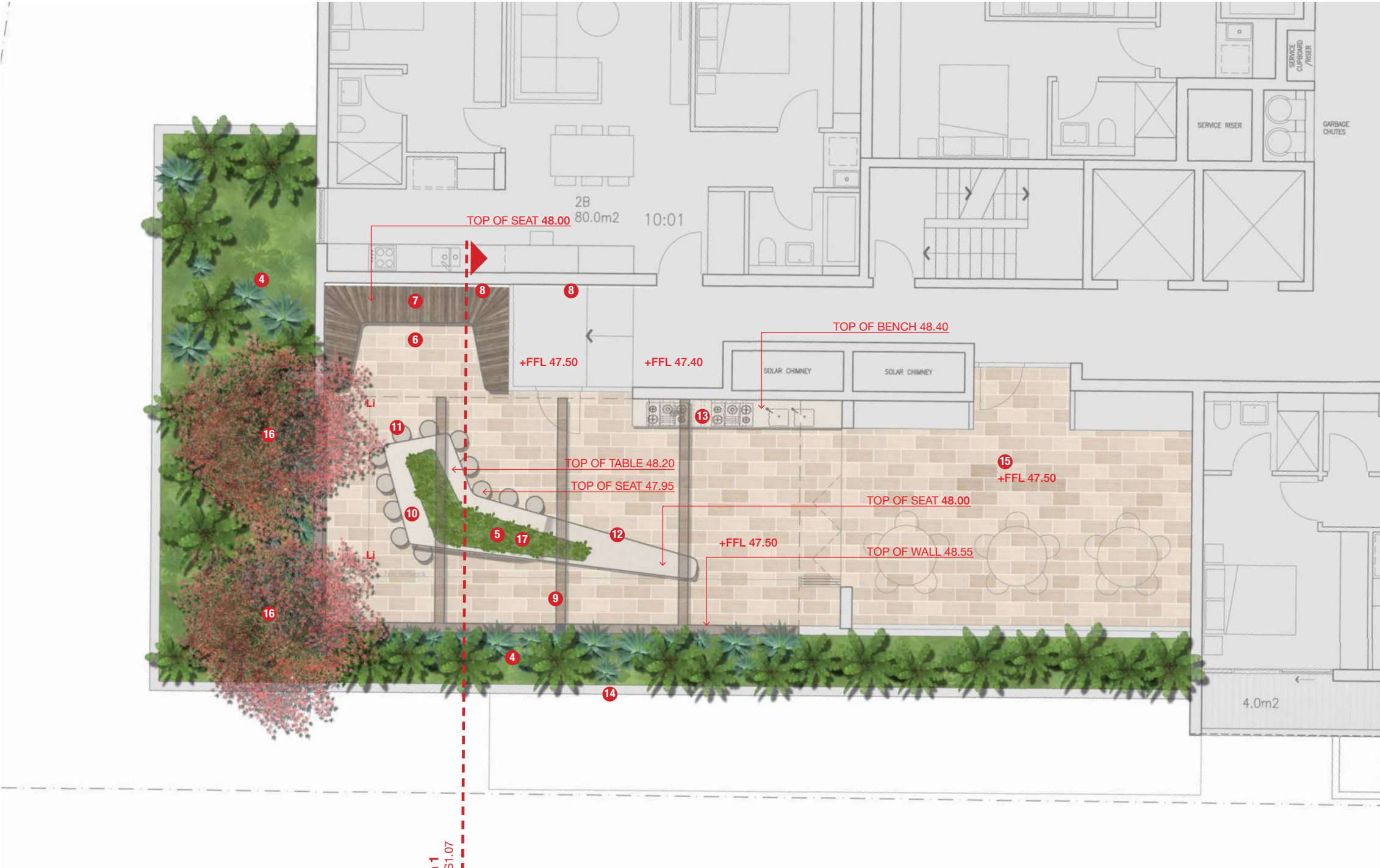
Prepared by
KANNFINCH
Kann Finch Group Pty Ltd 50 Carrington St, Sydney NSW 2000
ACN 139 614 738 Tel +61 2 9299 4111 www.kannfinch.com
Nominated Architect: Stephen Jamison NSW ARB Reg No 5108

Drawing
LANDSCAPE PLAN
LEVEL 10

Scale	Drawn	Revision	Date
1: 100 @A1 1: 200 @A3	GM	A	20.06.17

Drawing No.
DA_LS 1.04

LANDSCAPE DETAIL PLAN: LEVEL 10 COMMUNAL TERRACE GARDEN



LEGEND

- 1 PLANTING MATRIX # 1: Native plant mix (refer to plant schedule)
- 2 PLANTING MATRIX # 2: Native grass mix (refer to plant schedule)
- 3 PLANTING MATRIX # 3: Accent shade plant Mix (refer to plant schedule)
- 4 PLANTING MATRIX # 4: Feature plant mix (refer to plant schedule)
- 5 PLANTING MATRIX # 5: Herb garden mix (refer to plant schedule)
- Feature stone paving
- Lawn
- Ca *Cupaniopsis anacardioides*
- Ti *Tristaniopsis laurina*
- Li *Lagerstroemia indica* var. *Indian Summer*
- 6 Seating Nook
- 7 Timber daybed & seating
- 8 Feature wall to possibly extend through to internal wall
- 9 Pergola to Architect's details
- 10 Sculptural fixed dining table with central planter
- 11 Sculptural fixed seating stools
- 12 Sculptural beach seat extending from dining table
- 13 BBQ/outdoor kitchen bench and cupboard
- 14 Raised planter to Architect's details
- 15 Communal room
- 16 Deciduous tree for maximum solar access in winter, shade in summer
- 17 Communal herb garden

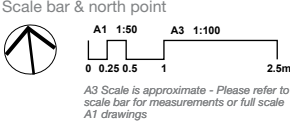
NOTES

- Public Domain upgrades will be as required by Council
- Levels shown are indicative
- Refer to Architectural drawings for levels and further detail

REV	REVISION DESCRIPTION	CHK.	DATE
A	Issued for DA	GM	20.06.17

DO NOT SCALE from this drawing. Use given dimensions only. Check all dimensions on the job prior to commencement of shop drawings or fabrication. Any discrepancies are to be referred to the Architect/Engineer/Designer prior to commencement of work.

Client
Provent Group



Project
PROPOSED RESIDENTIAL DEVELOPMENT LANDSCAPING:
32 Joseph Street, Lidcombe, 2141, Sydney
LANDSCAPE DEVELOPMENT APPLICATION

Prepared by
KANNFINCH
Kann Finch Group Pty Ltd 50 Carrington St, Sydney NSW 2000
ACN 139 614 738 Tel +61 2 9299 4111 www.kannfinch.com
Nominated Architect: Stephen Jamison NSW ARB Reg No 5108

Drawing
LANDSCAPE PLAN
LEVEL 10: Communal Terrace

Drawing No.
DA_LS 1.05

Scale	Drawn	Revision	Date
1: 50 @A1 1: 100 @A3	GM	A	20.06.17

PROPOSED PLANTING

PROPOSED PLANT SCHEDULE

PLANT SCHEDULE					
Botanical Name	Common Name	Pot Size	Mature Height (m)	Mature Spread (m)	Quantity
Trees					
<i>Cupaniopsis anacardioides</i>	Tuckeroo	200L	5-8	5-8	2
<i>Lagerstroemia indica</i> var. <i>Indian Summer</i>	Crepe Myrtle	200L	6-8	4-5	2
<i>Tristaniopsis laurina</i>	Kanooka	200L	6-8	4-6	3
Shrubs					
<i>Agave attenuata</i>	Century Plant	300mm	1	1	TBC
<i>Allium schoenoprasum</i>	Chives	150mm	0.3	0.15	TBC
<i>Aloe vera</i>	Aloe	150mm	0.25	0.4	TBC
<i>Anigozanthos</i> sp.	Kangaroo Paw	300mm	0.3-1	0.4-0.8	TBC
<i>Asplenium australasicum</i>	Bird's Nest Fern	300mm	0.6-.8	1-2	TBC
<i>Cichorium endivia</i>	Endive	150mm	0.3	0.4	TBC
<i>Cichorium intybus</i>	Chichory	150mm	0.3	0.4	TBC
<i>Crinum pedunculatum</i>	Spider Lily	300mm	1-2	1-2	TBC
<i>Dianella revoluta</i> 'Dinky Di'	Blue Flax Lily	150mm	0.2-0.4	0.3-0.4	TBC
<i>Dicksonia antarctica</i>	Soft Tree Fern	35L	3-8	4-5	TBC
<i>Doryanthes excelsea</i>	Gymea Lily	35L	1-1.5	1-1.5	TBC
<i>Michelia figo</i>	Port Wine Magnolia	300mm	3	2-3	TBC
<i>Melaleuca nodosa</i>	Ball Honey Myrtle	35L	1.5-3	1-2	TBC
<i>Mentha</i> sp.	Common mint	150mm	0.3	0.5	TBC
<i>Ocimum basilicum</i>	Basil	150mm	0.8	0.3	TBC
<i>Origanum vulgare</i>	Oregano	150mm	0.3	0.8	TBC
<i>Petroselinum crispum</i>	Parsley	150mm	0.5	0.3	TBC
<i>Philodendron 'xanadu'</i>	Heart-leaf philodendron	300mm	0.75	0.5	TBC
<i>Phormium tenax</i> 'Purpureum'	New Zealand Flax	300mm	1.2	1	TBC
<i>Rosmarinus officinalis</i>	Rosemary	150mm	1	0.5	TBC
<i>Rumex acetosa</i>	Sorrel	150mm	0.3	0.5	TBC
<i>Salvia officinalis</i>	Sage	150mm	0.3	0.3	TBC
<i>Sansevieria trifasciata</i>	Mother In Laws Tongue	150mm	0.5-0.7	0.3	TBC
<i>Strelitzia nicolai</i>	Giant Bird of Paradise	35L	4	2	TBC
<i>Zamioculcas zamiifolia</i>	Zanzibar Gem	300mm	0.8	1	TBC
Ground Covers / Climbers					
<i>Ajuga reptans</i>	Carpet Bugle Weed	150mm	0.15	0.8-1	TBC
<i>Dichondra argentea</i> 'Silver Falls'	Silver Dichondra	150mm	0.1	0.7	TBC
<i>Senecio serpens</i>	Blue Chalk Sticks	150mm	0.15-0.3	0.3-0.6	TBC
<i>Thymus vulgaris</i>	Thyme	150mm	0.15	0.8	TBC
<i>Trachelospernum jasminoides</i>	Native Jasmine	150mm	1-2	0.3-0.4	TBC
<i>Tradescantia pallida</i> 'Purpurea'	Purple Heart	150mm	0.25	1-1.5	TBC
<i>Viola hederacea</i>	Native Violet	150mm	0.2-0.5	0.2-0.5	TBC
Grasses					
<i>Dianella caerulea</i> 'Emerald Fountain'	Blue Flax Lily	150mm	0.4	0.4	TBC
<i>Isolepis nodosa</i>	Knobby Club Rush	150mm	0.8-1	0.6-0.8	TBC
<i>Liriope muscari</i> 'Isabella'	Isabella Liriope	150mm	0.4	0.5	TBC
<i>Lomandra longifolia</i> 'Tanika'	Matt Rush	150mm	0.5	0.6	TBC
<i>Lomandra confertifolia</i> 'Little Con'	Small Matt Rush	150mm	0.4	0.6	TBC
Lawn					
<i>Stenotaphrum secundatum</i> 'Sir Walter'	Soft Leafed Buffalo	roll	-	-	TBC

PROPOSED PLANT MATRICES

PLANTING MATRIX # 1: Native plant mix	
<i>Anigozanthos</i> sp.	Kangaroo Paw
<i>Asplenium australasicum</i>	Bird's Nest Fern
<i>Crinum pedunculatum</i>	Spider Lily
<i>Dianella caerulea</i> 'Emerald Fountain'	Blue Flax Lily
<i>Dicksonia antarctica</i>	Soft Tree Fern
<i>Doryanthes excelsea</i>	Gymea Lily
<i>Isolepis nodosa</i>	Knobby Club Rush
<i>Lomandra confertifolia</i> 'Little Con'	Small Matt Rush
<i>Melaleuca nodosa</i>	Ball Honey Myrtle
<i>Trachelospernum jasminoides</i>	Native Jasmine
<i>Viola hederacea</i>	Native Violet
PLANTING MATRIX # 2: Native grass mix	
<i>Dianella caerulea</i> 'Emerald Fountain'	Blue Flax Lily
<i>Lomandra confertifolia</i> 'Little Con'	Small Matt Rush
<i>Lomandra longifolia</i> 'Tanika'	Matt Rush
PLANTING MATRIX # 3: Accent shade plant Mix	
<i>Ajuga reptans</i>	Carpet Bugle Weed
<i>Asplenium australasicum</i>	Bird's Nest Fern
<i>Dichondra argentea</i> 'Silver Falls'	Silver Dichondra
<i>Doryanthes excelsea</i>	Gymea Lily
<i>Liriope muscari</i> 'Isabella'	Isabella Liriope
<i>Philodendron 'xanadu'</i>	Heart-leaf philodendron
<i>Tradescantia pallida</i> 'Purpurea'	Purple Heart
PLANTING MATRIX # 4: Feature plant mix	
<i>Agave attenuata</i>	Century Plant
<i>Dianella revoluta</i> 'Dinky Di'	Blue Flax Lily
<i>Phormium tenax</i> 'Purpureum'	New Zealand Flax
<i>Sansevieria trifasciata</i>	Mother In Laws Tongue
<i>Senecio serpens</i>	Blue Chalk Sticks
<i>Strelitzia nicolai</i>	Giant Bird of Paradise
<i>Zamioculcas zamiifolia</i>	Zanzibar Gem
PLANTING MATRIX # 5: Herb garden mix	
<i>Allium schoenoprasum</i>	Chives
<i>Aloe vera</i>	Aloe
<i>Cichorium endivia</i>	Endive
<i>Cichorium intybus</i>	Chichory
<i>Mentha</i> sp.	Common mint
<i>Ocimum basilicum</i>	Basil
<i>Origanum vulgare</i>	Oregano
<i>Petroselinum crispum</i>	Parsley
<i>Rosmarinus officinalis</i>	Rosemary
<i>Rumex acetosa</i>	Sorrel
<i>Salvia officinalis</i>	Sage
<i>Thymus vulgaris</i>	Thyme

PLANT IMAGES



NOTES

- Refer to Landscape Plans for proposed planting locations

REV	REVISION DESCRIPTION	CHK.	DATE
A	Issued for DA	GM	20.06.17

DO NOT SCALE from this drawing. Use given dimensions only. Check all dimensions on the job prior to commencement of shop drawings or fabrication. Any discrepancies are to be referred to the Architect/Engineer/Designer prior to commencement of work.

Client
Provent Group

Scale bar & north point
N/A

Project
PROPOSED RESIDENTIAL DEVELOPMENT LANDSCAPING:
32 Joseph Street, Lidcombe, 2141, Sydney

LANDSCAPE DEVELOPMENT APPLICATION

Prepared by



KANNFINCH

Kann Finch Group Pty Ltd 50 Carrington St. Sydney NSW 2000
ACN 139 614 738 Tel +61 2 9299 4111 www.kannfinch.com
Nominated Architect: Stephen Jamison NSW ARB Reg No 5108

Drawing PROPOSED PLANTING PLANT SCHEDULE & IMAGES		Drawing No. DA_LS 1.06	
Scale N/A	Drawn GM	Revision A	Date 20.06.17

LANDSCAPE SECTION 1 & DESIGN INTENT

LEVEL 10 COMMUNAL TERRACE GARDEN



LEGEND

- 1 PLANTING MATRIX # 1: Native plant mix (refer to plant schedule)
- 2 PLANTING MATRIX # 2: Native grass mix (refer to plant schedule)
- 3 PLANTING MATRIX # 3: Accent shade plant Mix (refer to plant schedule)
- 4 PLANTING MATRIX # 4: Feature plant mix (refer to plant schedule)
- 5 PLANTING MATRIX # 5: Herb garden mix (refer to plant schedule)
- 6 Seating Nook
- 7 Timber daybed & seating
- 8 Feature wall to future detail
- 9 Pergola to Architect's details
- 10 Sculptural fixed dining table with central planter
- 11 Sculptural fixed seating stools
- 12 Sculptural beach seat extending from dining table
- 13 BBQ/outdoor kitchen bench and cupboard
- 14 Raised planter to Architect's details
- 15 Communal room

NOTES

- Public Domain upgrades will be as required by Council
- Levels shown are indicative
- Refer to Architectural drawings for levels and further detail

LANDSCAPE DESIGN INTENT

The proposed landscape design is focused around making best use of the available landscape areas for residents, tenants, users and visitors.

The planted areas on the ground floor and levels 1 and 10, also aim to enrich the appearance of the development as well as the streetscape, while creating ambience within the development.

The Level 10 Terrace Garden is dedicated as the Communal Open space for residents and is generally aimed at accommodating for communal gatherings (in particular as it extends from the communal room), as well as individual use with the provision of daybeds and seating, as well as a fixed communal dining table and seating.

An outdoor kitchen with BBQ facilities is also proposed to provide residents with a functional and useable garden area.

Feature planting will run along the perimeter of the terrace whereby sculptural and accent plants have been proposed to both provide aesthetics and screen unwanted views. In addition deciduous trees are located along the western edge to provide shade in the summer and maximize the solar access during winter.

Within the dining table, a planter has been proposed to allow for a communal herb garden.

With respect to the Public Domain, at the time of preparing this submission, the requirements for the Public Domain areas are unknown as there are no guidelines available for the site area.

Auburn (Cumberland) Council was also contacted to obtain further confirmation of the required public domain treatments as well as Street Tree planting requirements, however no advice had been received prior to making this submission, and therefore what has been shown in the Landscape Plans is only indicative and subject to future advice from Council.

MATERIAL & CHARACTER IMAGES



Sculptural seating



Feature stone paving



Native grasses



Herb garden



Recess feature lighting



Feature wall



Sculptural concrete forms



Accent planting



Feature lighting

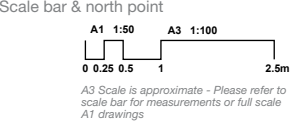


Outdoor kitchen / BBQ

REV	REVISION DESCRIPTION	CHK.	DATE
A	Issued for DA	GM	20.06.17

DO NOT SCALE from this drawing. Use given dimensions only. Check all dimensions on the job prior to commencement of shop drawings or fabrication. Any discrepancies are to be referred to the Architect/Engineer/Designer prior to commencement of work.

Client
Provent Group



Project
PROPOSED RESIDENTIAL DEVELOPMENT LANDSCAPING:
32 Joseph Street, Lidcombe, 2141, Sydney

LANDSCAPE DEVELOPMENT APPLICATION

Prepared by
KANNFINCH
Kann Finch Group Pty Ltd 50 Carrington St, Sydney NSW 2000
ACN 130 614 730 Tel +61 2 9299 4111 www.kannfinch.com
Nominated Architect: Stephen Jamison NSW ARB Reg No 5108

Drawing
LANDSCAPE SECTION 1 & DESIGN INTENT
LEVEL 10 COMMUNAL TERRACE GARDEN

Scale	Drawn	Revision	Date
1: 50 @A1 1: 100 @A3	GM	A	20.06.17

Drawing No.
DA_LS 1.07